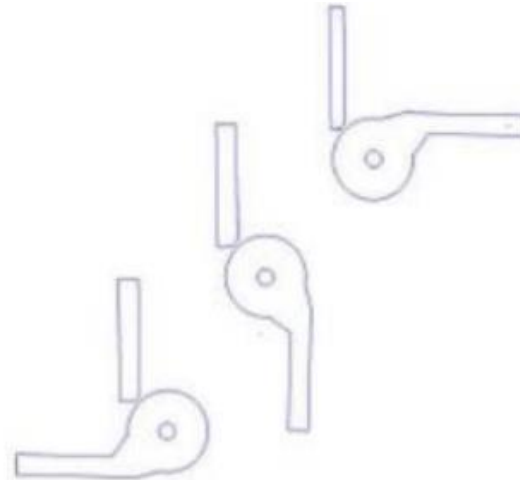
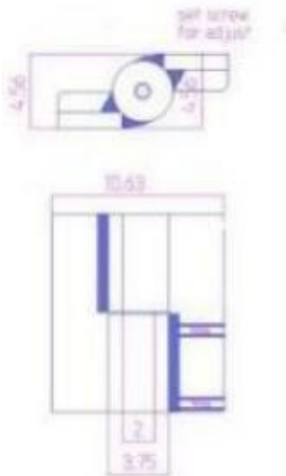
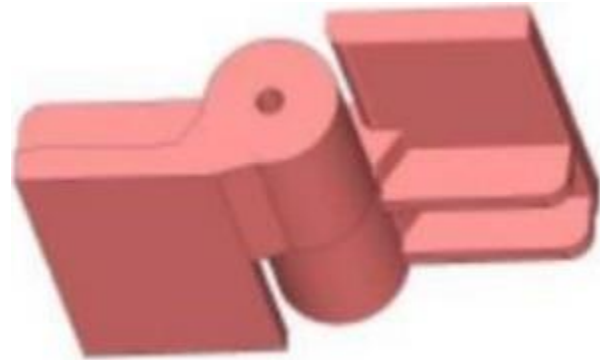


12" x 10 5/8" Carbon Steel Half Mortise Hinges

Model Number: 2200LH-GALV Half
Mortise

Price: \$ 3000

- Maximum Door Weight: 20,000 LBS
- Maximum Radial Load: 8,800 LBS
- Approx Width: 10 5/8"
- Height: 12"
- Leaf Thickness: 1"
- Weight: 66 LBS
- Mount: Weld On
- Material Type: Carbon Steel
- Finish: Hot Galvanized



Kiesler Machine Inc

13700 Chrissy Lane NE
Palmyra, IN. 47164-8768

Contact Info :

info@kieslermachine.com
Toll-Free : 888-565-6610
Phone : 812-364-6610



Smoother Than The Rest
Guaranteed!

Data Provided For Reference Only.

Disclaimer: This drawing is property of Kiesler Machine Inc, Kieslermachine.com. It is owned with the understanding that it will in no way be used in a manner which is harmful to Kiesler Machine Inc.