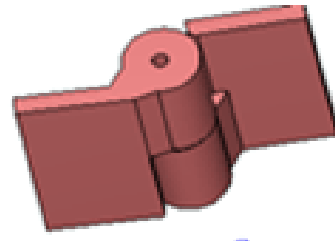


## 5"x 4 1/8" Galvanized Carbon Steel Half Mortise Hinges

Model Number: 2500LH-GALV Half  
Mortise

**Price: \$ 395**

- Application: Half Mortise
- Type: Left-Hand
- Material Type: Carbon Steel
- Maximum Door Weight: 1000 lbs.
- Maximum Radial Load: 400 lbs.
- Mount: Weld-On or Bolt-On
- Approximate Width: 4 1/8"
- Height: 5"
- Weight: 4 lbs.
- Bearing Type: Thrust and Needle Bearings
- Finish: Hot Dipped Galvanized
- Service: Heavy Duty



### **Kiesler Machine Inc**

13700 Chrissy Lane NE  
Palmyra, IN. 47164-8768

### **Contact Info :**

info@kieslermachine.com  
Toll-Free : 888-565-6610  
Phone : 812-364-6610



Smoother Than The Rest  
Guaranteed!

Data Provided For Reference Only.